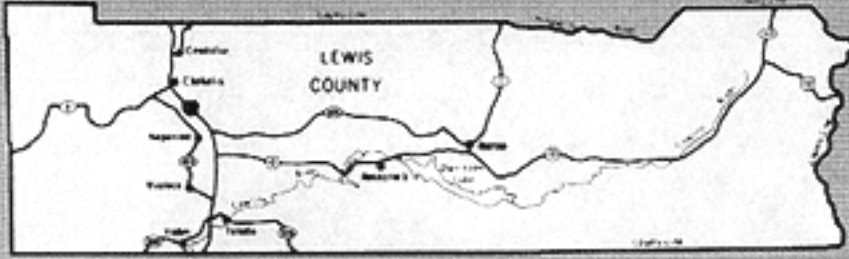


LEWIS COUNTY DEMOGRAM



Volume 6 Number 2 February, 1989

Published by the Lewis County Democratic Central Committee

Calendar of Events

Thursday, February 16

Jolene Unsoeld Talks
King Solomon's Restaurant
5 P.M. - 7 P.M.

Monday, February 20

Presidents' Day
Lewis County Retired Teachers Assoc.
Roy's Western Buffet
12 Noon

Thursday, February 23

Lewis County Democratic Meeting
King Solomon's Restaurant
Dinner at 6 P.M. Meeting at 7 P.M.

Thursday, March 2

Chehalis Lions Club Meeting
Rib Eye Restaurant
Dinner at 7 P.M. Meeting at 7:30

Saturday, March 4

Lewis County Democratic Auction
Centralia Eagles, 5-9 P.M.
Refreshments, Auction, and Much More...

Monday, March 20

Spring begins
Lewis County Retired Teachers Assoc.
Roy's Western Buffet - 12 Noon

Chairman's Corner

Stu Halsan



set and do a guest shot in the Capitol Building in D.C.

A fifty percent raise for members of Congress shouldn't be a partisan issue; it just shouldn't be. People who want to serve the public in Congress have ample reasons to do so without needing to line their pockets in the process. Remember what public service really means.

Sure they should do away with Honoraria, the backdoor way many in Congress funnel thousands of special interest dollars into their private bank accounts, but they don't need a pay raise of double the legal limit on speaking fees to prohibit them. Just do it.

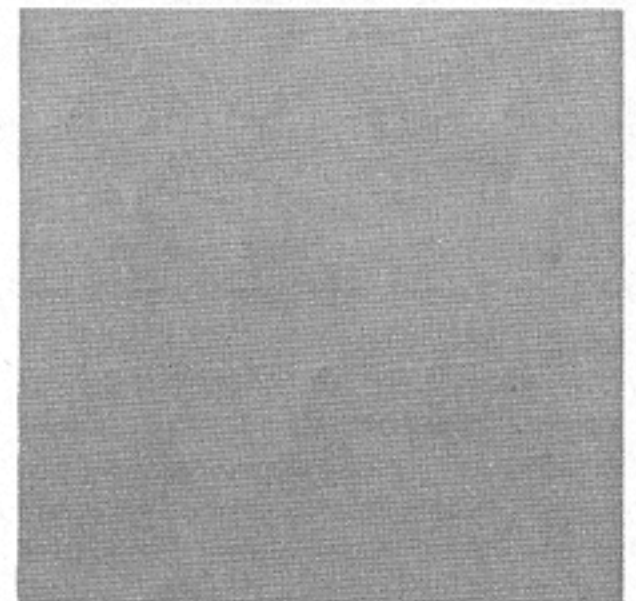
The pre-raise salary of over \$89,000 a year is more than 99% of what the rest of us get. It's more than five times what members of the Washington Legislature receive, though admittedly members of Congress are full time and not half-time.

I applaud Jolene for pledging to put any increase she might get into a trust to fund internships in Washington D.C. for young

people in the district. That will be a wonderful opportunity for many. All members of Congress should do it. Still we should think of where we go from here.

The Congress ought to try the idea that I put before the State Legislature, and link any future raises for them to the average raise received by an ordinary federal employee. You might see then a 3%, a 4%, or a 5% raise, but I guarantee you wouldn't ever see one of 50% again. Generosity only goes so far.

Halsan promises surprises



Mystery Guest

The February meeting of the Lewis County Democrats features a mystery speaker. You will have to come to the meeting to discover what we have in store. Be there early and get a good seat.

Lewis County Democratic Executive Committee

| | |
|--------------------------------------|-----------|
| Stu Halsan, Chairman | Centralia |
| Jan Leth, First Vice Chairperson | Centralia |
| Neal Nogler, Second Vice Chairperson | Centralia |
| Merrily Knutsen, Secretary | Onalaska |
| Donna Kostick, Treasurer | Centralia |
| Wyn Smethers, State Committeewoman | Centralia |
| Ed Smethers, State Committeeman | Centralia |
| Bill Ih, Past Chair | Chehalis |

Lewis County Demogram

Published for Lewis County voters by the Lewis County Democratic Central Committee.

Editor..... Neal Nogler

Circulation Manager..... Ed Smethers

Printed at Chehalis Printing, Chehalis, WA

Sidelights

The Lewis County slug searches for identity

Like bad breath Lewis County residents have chosen in years past to avoid, if not ignore, one of our most versatile resources. We speak of the several varieties of gastropods (slugs) working tirelessly to rid our land of unwanted refuse. Of course, as any gardener can tell, they don't always limit themselves to *unwanted* refuse. And they do on occasion get stuck to things like tools, clothing, the heel of our boot, or whatever wet, clammy thing they can get under.

But we are speaking of a resource here. And in addition to their penchant for indiscriminate consumption they have served as a kind of medicine. Rolled in flour they have been swallowed whole by some Frenchmen to fight consumption.

And they are an excellent source of protein.

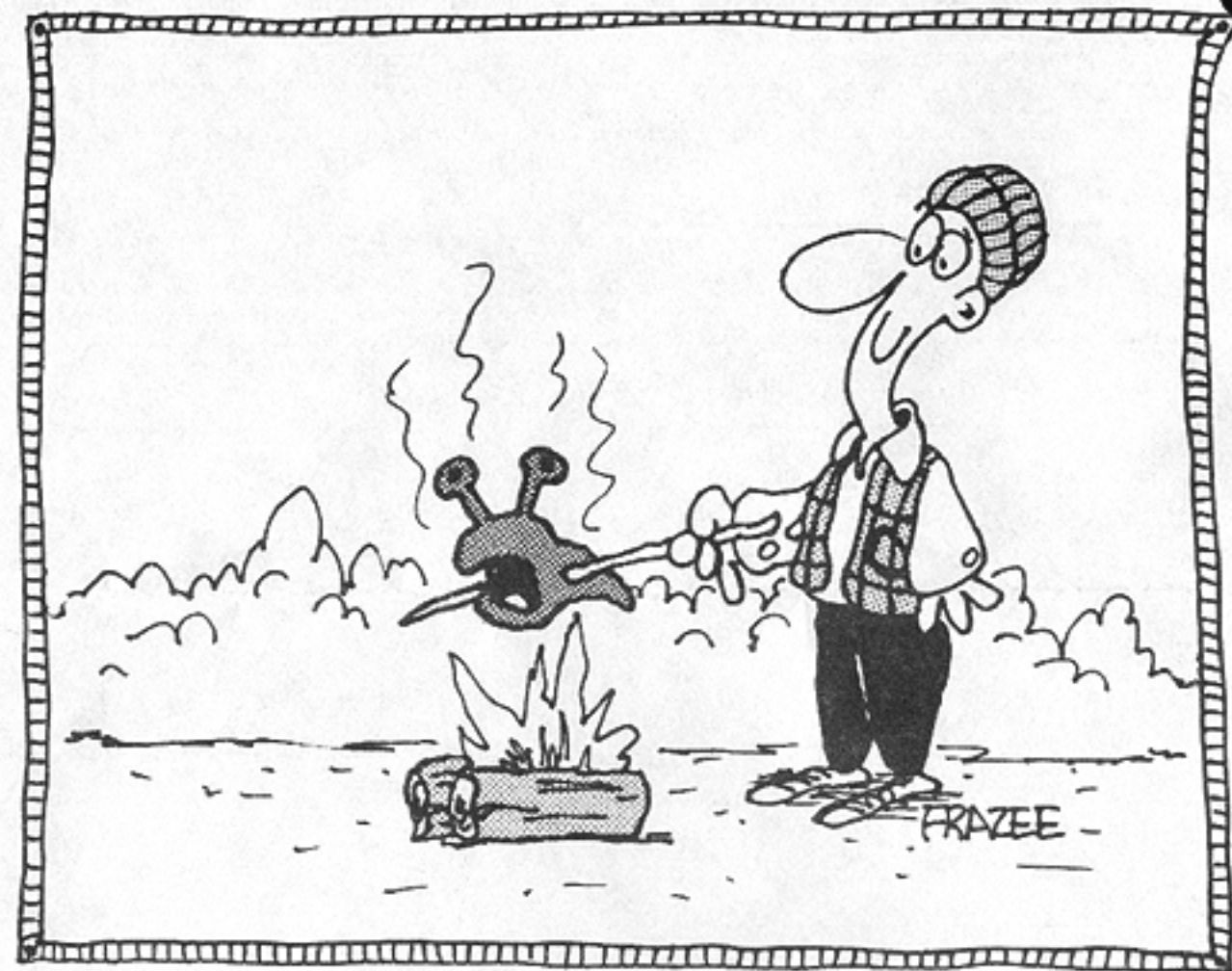
So, after consulting with our friend, gardener, local slug authority, and gourmet cook Micheline Bickford, we offer as a public service the following recipe:

Select a medium size red slug (that has been kept from grazing for at least three days in a tightly meshed wire cage).

Place the slug in boiling water.

Boil like a lobster.

Making a paste of bread crumbs, milk,



butter, and garlic, roll the boiled slug in the mixture.

Add two or three drops of white wine.

Bake at 350 degrees for 20 minutes.

And voila...bon appetit.

Perhaps Wyn Smethers and the refreshment committee of the Lewis County Democratic Auction could offer the public a sample of this truly indigenous dish on March 4th.

Jolene comes to town

Congresswoman Jolene Unsoeld will be in Centralia Thursday, February 16th, at King Solomon's from 5 to 7 p.m. Come meet your representative to Congress. And if you have concerns, now is your chance to be heard.

Editorial

Senate Bill searches for perfect balance

We see where Senator Neil Amondson has his name on a bill (S.B. 5562) exhorting the governor to make appointments to the college boards of the state to "...insure ...the board maintains a geographical balance, a balance between public sector and private sector experience...the interests of labor, industry, agriculture, the professions, and ethnic groups..."

There are a few groups left off this list — the poor, senior citizens, Catholics-Protestants-Jews-Atheists — but nitpicking aside we would say that if the bill becomes law the governor has his work cut out for him. Just to find five competent, willing *people* to serve on such a board would appear to us to be an accomplishment enough. As our Uncle Charlie might have said, "The pay ain't high."

Fairlanes Bowl

Donna & Dan Kostick
1501 S. Gold • Centralia, WA
736-4100

Nogler Tree Farm

A Multi-Species Plantation
Grapeview, Washington

IWA • AFL-CIO

Local 3-130

2211 Foron Road
Centralia, WA

736-5341

Lewis County Washington Building & Construction Trades Council

417 N. Pearl Street
Centralia, Washington 98531

Sportswear and Custom Screen Printing



44 N.E. Boistfort
Chehalis
748-1411

Here is your Executive Board, Lewis County Democrats, 89-91

- CHAIR:** **Stu Halsan.** Attorney-at-Law, Centralia. Former State Representative, State Senator.
- 1ST VICE CHAIR:** **Jan Leth.** Counselor, Centralia Middle School. WEA, AAUW activist. Tireless campaign worker.
- 2ND VICE CHAIR:** **Neal Nogler.** Centralia College English Instructor, retired. Demogram editor. Member of the "Third House," State Legislature.
- SECRETARY:** **Merrily Knutsen.** Administrative Assistant, Lewis County Assessor. Served on the Centralia College Board. A farmer, a waitress, a tool design craftsman — a true Renaissance woman.
- TREASURER:** **Donna Kostick.** Teacher and Cheer Leader Director, Centralia High School. Held over from last term.
- STATE COMMITTEE WOMAN** **Wyn Smethers.** 1989 Democrat of the Year in Lewis County (with her husband). Campaign worker extraordinaire.
- STATE COMMITTEE MAN** **Ed Smethers.** Democrat of the Year (see above). Last term Vice Chair in Lewis County and in 20th Legislative Dist. Campaign manager for Odegaard campaign. A man for all seasons.
- PAST CHAIR:** **Bill Ith.** Real Estate Appraiser, Lewis and Thurston Counties. Past Demogram Editor. Chair, Lewis County, 87-89. A man of strong convictions.

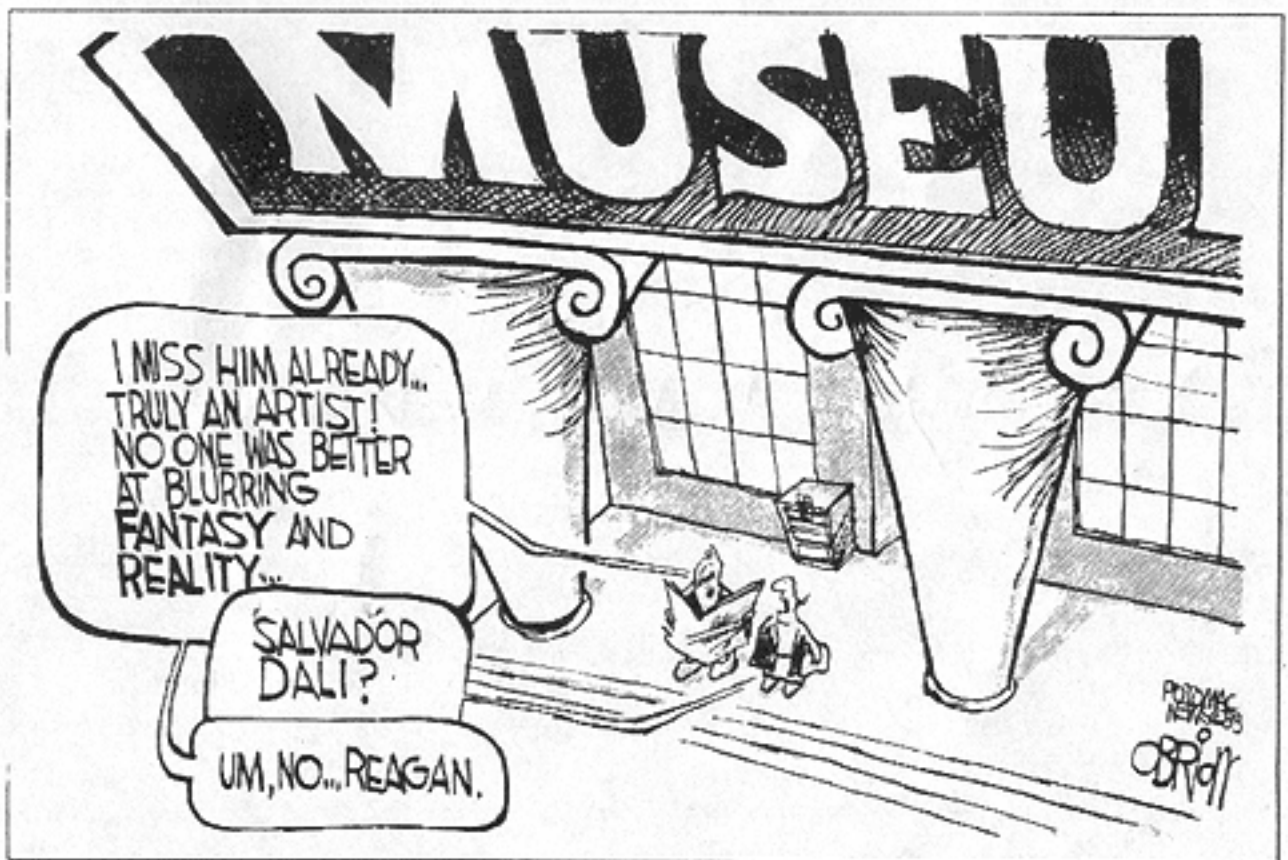
A tax is a tax even if we cannot read lips

Robin Hood would have just been a hood with logic like this.

The Bush administration has floated its first trial balloon on whether a tax by any other name could smell . . . a balloon some in the Federal City have likened to the Hindenberg. Charge the customers of Savings and Loans billions to pay for the mismanagement that brought on their insolvency. Mismanagement that I'm sure put a Mercedes in many a banker's garage.

One congressman referred to it as a "reverse toaster" plan, deposit your money and you give the bank a toaster. Such a deal.

You sure have to be careful when you try to read people's lips that they're not practicing ventriloquism.



Editorial We face our dark side

It is hard to be rational when confronted with the Ted Bundy story. His case certainly offers no support for those opposed to capital punishment. Most would agree he deserved to die.

But there is something terribly wrong with the focus of attention given this particular case — the morbid fascination with the details of his murders, the probing into the lives of families and friends of the victims and of the killer, the almost stage-like setting of his execution.

And we cannot feel proud of the crowd who attended the spectacle bearing such signs as "Thank God it's FRY day" and "We're here at the Bundy Barbecue."

Vengeance is an ugly thing.

An Old Friend complains that the worst curse facing modern man is the xerox machine. Every nitwitted note is xeroxed, reproduced several hundred times, and sent to unsuspecting P.O. Box holders all over the state.

Knutsen Christmas Tree Farm

Mack & Merrily Knutsen
Owner/Operators
Onalaska, WA

Cowlitz Bend Ranch

Cattle, Hogs & Sheep

A.D. Lyons
Toledo, WA

864-6279

Enbody and Dugaw

Attorneys-at-Law

107 S. Tower • Centralia
(206) 736-8269

BULK RATE
U.S. Postage
PAID
Permit #56
Chehalis, WA

Capital punishment advocates rest their case with Bundy

Ted Bundy was sick. Very sick. So, too, were the crowds of people waiting in a festive mood outside the prison celebrating his last breath. Putting aside the tasteless slogans and commemorative items, however, I would like to pose a couple of questions. Will anybody really grieve for Ted Bundy? Will we, as a people, really lose anything by his death?

I think not.

The death penalty is obviously one of those issues that cuts people to the core, one where arguments of emotion on both sides seem to transcend and overcome logic. And although polls indicate overwhelming support for the death penalty among the public, it depends to a great extent on how the questions are asked. It divides us.

It is argued that to put people to death for whatever reason lowers us to their level, that by killing them, society itself becomes a killer. That ignores the basic fact that the reasons for execution and murder are as different as night and day.

Laws, especially criminal laws, are the legislative, reasoned and secular blueprint of our society's collective moral conscience. They set the terms of the social contract by which we as a people survive and function. Just as an individual might, so too can society reach a limit at which the only response is moral outrage. Laws channel the emotion of the moment, the urge for immediate revenge into a system where reflection and analysis can reach a

just result. The result, however, may be the same.

Unlike Bundy's egotistical, sociopathic, thrill-seeking reasons for gruesomely taking away others' right to life, the system that took his did it as the ultimate fulfillment of that social contract that he, aware of the consequences, knowingly, intentionally, and arrogantly ignored. And God knows the execution wasn't done on the spur of the moment.

Some point out a discriminatory nature in the death penalty because the overwhelming majority of people facing it are the product of various social ills such as poverty, abuse, and hopelessness. The exception to the rule, Bundy, shows that even a middle class, white, educated Republican can lack respect. We do not, however, have to tolerate the violent outgrowths of these problems to work to overcome them. The poorest of people are the likeliest victims, and, it would appear, just as supportive of capital punishment if not more so, as the rest of society.

Yes, we should make our society a better place for all, and a land of true opportunity, but let's not trivialize the life of the victim by exalting the life of the maniac. We may have great concern for the welfare of animals, but prolonging the danger posed by a rabid dog is not necessarily an expression of that concern.

Sometimes it's nice to base opinions on cases that are clear-cut, black and white, the easy calls. Bundy's was one of those,

Charles Rodman Campbell's another. Since there are closer cases, though, it's probably good that we take it slow, maybe not ten years slow, but the system is made to insure that we are not rash. If we are morally correct, we should not be afraid to examine our reasoning and the circumstances closely.

Before we exact the ultimate penalty we should be damn sure we're right. In Bundy's case we were.

Stu Halsan

Harold R. Holm, DDS
*Restorative, Implant, and
Family Dentistry*

1415 Harrison Ave. N.W.
Olympia, WA • 943-9260

Stuart A. Halsan
Attorney-at-Law

114 West Pine
Centralia • (206) 736-0774

Petra Insurance Agency, Inc.
Complete Insurance Service
Evening Appointments

571 Pacific Ave.
Chehalis, WA 748-8855

**The Lewis County
Democratic Central Committee**
1329 Ham Hill Rd. • Centralia, WA 98531